



Installation Guide

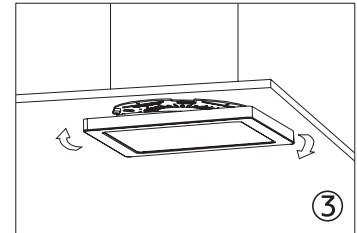
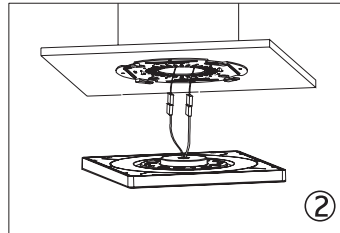
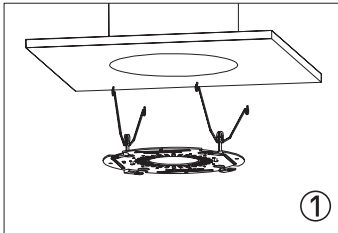
IMPORTANT SAFETY INFORMATION

- WARNING: RISK OF SHOCK** House electric current can cause painful shock or serious injury unless handled properly. For your safety, always remember to :
 - A : Turn off the power supply at the fuse or circuit breaker box before you install the fixture.
 - B : Ground the fixture to avoid potential electric shocks and to ensure reliable starting.
 - C : Double-check all connections to be sure they are tight and correct.
 - D : Wear rubber soled shoes and work on a sturdy wooden ladder.
- This fixture is designed for use in a circuit protected by a fuse or circuit breaker. It is also designed to be installed in accordance with local electrical codes. If you are unsure about your wiring, consult a qualified electrician or local electrical inspector, and check your local electrical code.
- WARNING: RISK OF CUTS** Some metal parts in the fixture may have sharp edges. To prevent cuts and scrapes, wear gloves when handling the parts.
- Account for small parts and destroy packing material, as these may be hazardous to children.

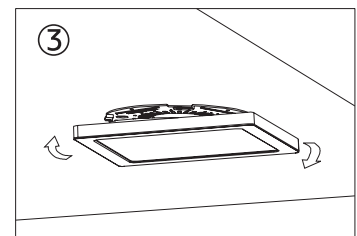
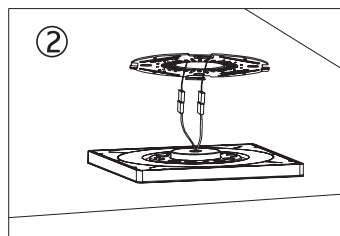
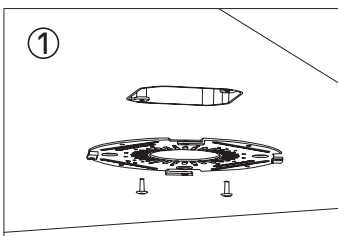
Product Specification

| Size | Wattage (W) | Voltage (V) | Rated Input Frequency (Hz) | Dimension (DxH) |
|-------|-------------|-------------|----------------------------|-----------------|
| 7 in | 12W | AC120V | 60Hz | 162x162x15mm |
| 9 in | 18W | | | 214x214x15mm |
| 12 in | 24W | | | 289x289x15mm |

Embedded in installation



Surface mounting installation



① Fix the installation Bracket;

② Connecting the wire;

③ Press the light to fit the bracket and Rotate clockwise.

Caution

- WARNING: Risk of fire.** Use AC120 60Hz circuits.
- Suitable for damp locations. Before installing your lighting fixture, thoroughly review enclosed installation manual. If you do not have sufficient electrical wiring experience, please refer to a do-it-yourself wiring handbook or have your fixture installed by a qualified licensed electrician. All electrical connections must be in a accordance with local and National Electrical Code(NEC) standards. Reliable operating temperature is -20 to +40 degrees Celsius(-4 to +104 degrees Fahrenheit).
- pls obey fire prevention regulations, do not cover the fixture with any heat insulated materials.
- Do not change the LED light source or driver inside under any circumstance.

Warranty:
5 years warranty



This product is for indoor use only



For use with dimmers